

TSC SERIES Tapered Seal Connectors

With TSC Series conical seal fittings, Nordson MEDICAL expands its range of products for small-bore connector applications in medical devices. TSC Series products offer the reliability, convenience and ease of use of luer fittings in a design that cannot be interconnected with conventional luers. The products are available in sizes to fit 1/8" (3.2 mm) and 3/16" (4.8 mm) ID flexible tubing.

FEATURES & BENEFITS

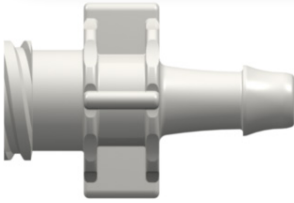
- Ergonomic grip - easy to use
- Conical (tapered) seal
 - Reliable, proven
 - Cost-effective
 - Easy to understand
- 15% higher flow capacity than conventional luers
 - Useful in a variety of applications
- Polypropylene resin
 - Excellent chemical resistance
 - Satisfies USP Class VI criteria
 - Compatible with EtO, gamma, and e-beam sterilization
- Cannot interconnect with conventional luer taper fittings
 - Eliminates possibility of end-user connection errors
- 500 Series single barbs
 - Compatible with PVC, polyurethane, rubber and TPE tubing
 - Better performance compared to multi-barb designs

SPECIFICATIONS

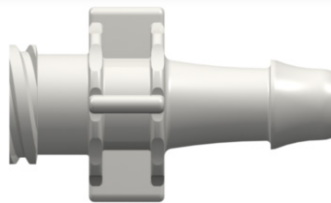
- **Materials:**
 - Polypropylene that satisfies USP Class VI criteria
- **Sterilization:**
 - Gamma radiation stable, EtO compatible, and e-beam
- **Fits Tubing IDs:**
 - 1/8" (3.2 mm)
 - 3/16" (4.8 mm)
- **Compatible Tubing:**
 - PVC
 - Polyurethane
 - Rubber
 - Thermoplastic elastomer (TPE)
- **Barb Style:**
 - 500 Series

Tapered Seal Connectors

TAPERED SEAL FITTINGS

**FLB035-1**

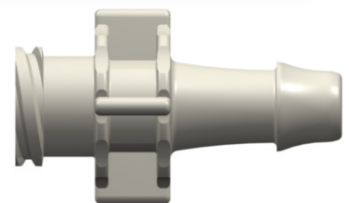
Female Large Bore Connector to 500 Series Barb, 3/16" (4.8 mm) ID Tubing, White Nylon

**FLB055-1**

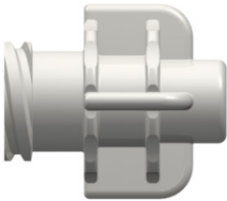
Female Large Bore Connector to 500 Series Barb, 1/4" (6.4 mm) ID Tubing, White Nylon

**FLB055-2**

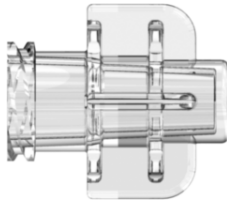
Female Large Bore Connector to 500 Series Barb, 1/4" (6.4 mm) ID Tubing, Black Nylon

**FLB055-8012**

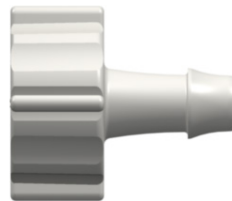
Female Large Bore Connector to 500 Series Barb, 1/4" (6.4 mm) ID Tubing, White Med. Grade ABS

**FLBP-1**

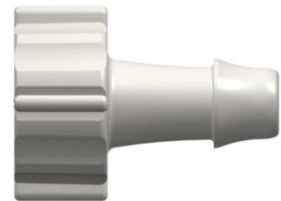
Female Large Bore Connector Cap, White Nylon

**FLBP-9**

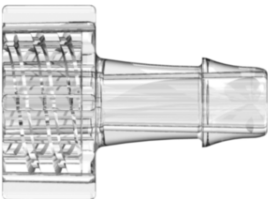
Female Large Bore Connector Cap, Clear Polycarbonate

**MLB035-1**

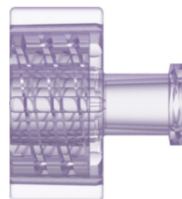
Male Large Bore Connector to 500 Series Barb, 3/16" (4.8 mm) ID Tubing, White Nylon

**MLB055-1**

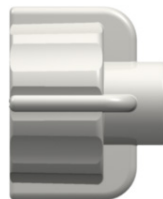
Male Large Bore Connector to 500 Series Barb, 1/4" (6.4 mm) ID Tubing, White Nylon

**MLB055-9**

Male Large Bore Connector to 500 Series Barb, 1/4" (6.4 mm) ID Tubing, Clear Polycarbonate

**MLBC8-9002**

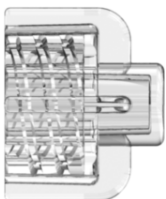
Male Large Bore Connector with Integral Lock Ring to Female Luer Thread Style, Radiation Stable Polycarbonate

**MLBP-1**

Male Large Bore Connector Plug, White Nylon

**MLBP-2**

Male Large Bore Connector Plug, Black Nylon

**MLBP-9**

Male Large Bore Connector Plug, Clear Polycarbonate

**TSC2F210-6005**

Female Taper Seal Non-Luer Connector to 200 Series Barb, 1/16" (1.6 mm) Tubing, Animal-Free Natural Polypropylene

**TSC2M210-6005**

Male Taper Seal Non-Luer Connector to 200 Series Barb, 1/16" (1.6 mm) Tubing, Animal-Free Natural Polypropylene

**TSC2MP-6005**

Male Taper Seal, Non-Luer Plug with Tether Recess, Animal-Free Natural Polypropylene